

# **Civilian/Military Taskforce Organizational Structure**

Prepared by

**Bureau of Statistics and Plans**

**and**

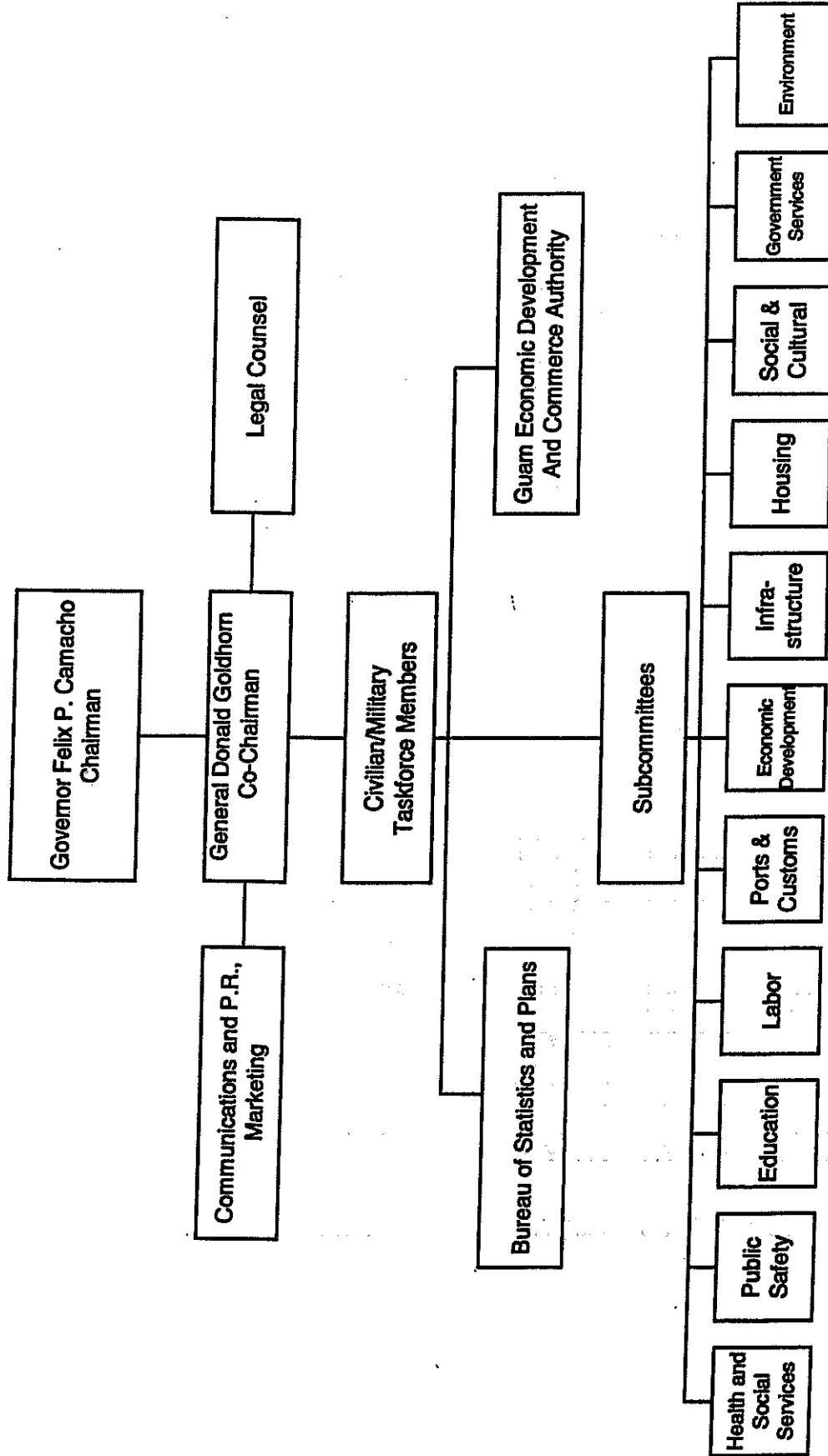
**Guam Economic Development and  
Commerce Authority**

**July 28, 2006**

# **Civilian / Military Taskforce**

- Created by Governor Felix P. Camacho through Executive Order 2006-10
- Taskforce comprised of Government, Military, Business and Community Representatives
- Develop an integrated comprehensive master plan that would accommodate the expansion of the military.
- Meet with Congressional, Defense and other representatives to demonstrate Guam's commitment to the U.S. military.
- Serve as the Government of Guam's single/central source of information for Department of Defense.
- Apply for federal grants-in-aid to implement the functions mandated by this Executive Order.

# ORGANIZATIONAL CHART



# Plan of Action

- **Address problematic concerns and issues as well as positive outcomes as designated by the subcommittees.**
- **Identify immediate and long term issues**
- **Develop comprehensive plan**
- **Infrastructural needs**
- **Funding needed to address concerns**
- **Personnel requirements**
- **Required legislation (Local and Federal)**

# Planning and Implementation

- **The C/MTF sub-committees should address both the positive and negative impacts that will affect the community.**
- **Promote positive impacts such as increased employment and entrepreneurial opportunities, stronger economy and a better quality of life.**
- **Negative impacts must be addressed to ensure a balance between the civilian and military communities.**
- **Guam's anticipated growth from 168,564 in 2005 to 180,692 in 2010 will put additional strain on services that are provided to the local population.**

# Planning and Implementation

- **The demands on the Governments infrastructure as well as services it provides the community must be able to meet the expectations of the anticipated growth.**
- **Most government entities have in place long range plans to accommodate the growth of the local population. But these plans do not include the massive movement of military personnel, namely the deployment of approximately 18,000 marines, dependents and support staff as well as increases of Navy and Air Force personnel.**
- **The additional strain on the local infrastructure could greatly affect the delivery of these services. In order to ensure that the demands of the growing community are met, detailed plans must be adopted and implemented to curtail any lapses in services to the community.**

# Sub Committees

C/MTF serve as Ex-Officio members

- **Health and Social Services**
- **Public Safety**
- **Education**
- **Labor**
- **Ports and Customs**
- **Economic Development**
- **Infrastructure**
- **Housing**
- **Social and Cultural**
- **Government Services**
- **Environment**

# Health and Social Services

**Chairperson: Director, Department of Public Health & Social Services**

**Members:**

**Department of Public Health and Social Services**

**Department of Mental Health and Substance Abuse**

**Guam Memorial Hospital Authority**

**Guam Medical Society**

**Guam Nurses Association**

**Guam Association of Social Workers**

**U. S. Naval Hospital**

**Non-Profit Social Service Organizations**

**Sanctuary Inc.**

**Alee Shelter**

**Erica's House**

**VARO**

**Family Support Services (Military)**

# Public Safety

**Chairperson: Director, Guam Homeland Security**

**Members:**

**Guam Police Department**

**Guam Fire Department**

**Unified Judiciary**

**Public Defenders Office**

**Attorney General's Office**

**Department of Corrections**

**Department of Youth Affairs**

**Customs and Quarantine**

**Military Police (Military)**

# Education

**Chairperson:** President, University of Guam

**Members:**

Guam Public School System

Department of Defense Education Activity

Anderson Air Force Education Office

University of Guam

Guam Community College

Vice President, Library Association

Committee on Education, Guam Legislature

Representatives from private schools

Navy College Director

# Labor

**Chairperson: Director, Department of Labor**

**Members:**

**Department of Labor**

**Agency for Human Resource Development**

**University of Guam**

**Guam Community College**

**Guam Employers Council**

**Guam Contractors Association**

**Guam Contractors License Board**

**Guam Hotel and Restaurant Association**

**Guam Chamber of Commerce**

**Society of Human Resource Managers**

**Military Civilian Personnel Office**

# Ports and Customs

**Chairperson: General Manager, PAG**

**Members:**

**Guam International Airport Authority**

**Port Authority of Guam**

**Customs and Quarantine**

**U. S. Immigration**

**U. S. Coast Guard**

# **Economic Development**

**Chairperson: Administrator, GEDCA**

**Members:**

**Guam Economic Development and Commerce Authority**

**Bureau of Statistics and Plans**

**Guam Visitors Bureau**

**Revenue and Taxation**

**Guam Chamber of Commerce**

**Guam Hotel and Restaurant Association**

**Department of Labor**

**Small Business Association**

**Pacific Islands Small Business Development Center Network**

# Infrastructure

**Chairperson: Director, Department of Public Works**

**Members:**

**Guam Water Works Authority**

**Guam Power Authority**

**Department of Public Works**

**Guam International Airport Authority**

**Port Authority of Guam**

**Guam Environmental Agency**

**Army Corps of Engineers**

**Private Communication Companies**

**Naval Facilities**

**36<sup>th</sup> Wing (U.S. Air Force)**

# Housing

**Chairperson: Director, Department of Land Management**

**Members:**

**Ancestral Lands Commission**

**Chamorro Land Trust Commission**

**Department of Land Management**

**Bureau Statistics and Plans (GIS)**

**GHURA**

**Guam Housing Corporation**

**Local Financial Companies**

**Guam Contractors Association**

**GEPA**

**Guam Realtors Association**

**Navy Housing**

**Air Force Housing**

# **Social and Cultural**

**Chairperson: President, DCA**

**Members:**

**Mayors Council**

**Department of Chamorro Affairs**

**Council on the Arts and Humanities**

**Nasion Chamorro**

**Guam Visitors Bureau**

**Cultural organizations**

**Moral Welfare and Recreation**

# Government Services

**Chairperson: Director, Department of Revenue and Tax**

**Members:**

**DISID**

**Department of Vocational Rehabilitation**

**Guam Mass Transit Authority**

**KGTF**

**Revenue and Taxation**

**Department of Agriculture**

**Civil Defense/Homeland Security**

**Veterans Affairs Office**

**Moral Welfare and Recreation**

# **Environment**

**Chairperson: Administrator, Guam EPA**

**Members:**

**Guam Environmental Protection Agency  
Water and Environmental Research Institute  
Department of Agriculture  
Bureau of Statistics and Plans  
Army Corp of Engineers  
Department of Public Works  
36<sup>th</sup> Wing (U.S. Air Force)  
Naval Facilities**

# **Executive Committee**

- **Comprised of all Chairpersons of the various sub committees.**
- **Chaired by the General Goldhorn and technical support provided by BSP and GEDCA.**
- **Compiling of data from the various subcommittees for presentation to the C/MTF for ratification.**
- **Coordinate the development and formulation of the draft integrated comprehensive master plan.**

# **Bureau of Statistics and Plans**

- **Serve as the primary point of contact in the government of Guam for the C/MTF.**
- **Expedite C/MTF research and data requests.**
- **Coordinate plans and actions of government agencies and community based organizations.**
- **Compile all data and reports generated by the subcommittees.**

# **Guam Economic Development Authority**

- **Initiate OEA grant application to fund the services of consultants.**
- **Provide economic research and data.**
- **Coordinate the business community and trade organizations.**
- **Apply and secure funds through grants and contributions.**

# Closing

- **The priority of the taskforce is to focus on the equitable delivery of services to both the military and the civilian population.**
- **There are positives and negatives that need to be addressed to achieve a cohesive existence between the military and the civilian population.**
- **The C/MTF must make military expansion work for Guam, improving the quality of life for the entire island.**